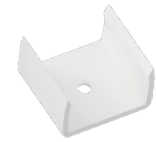
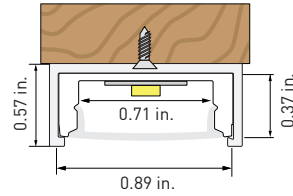
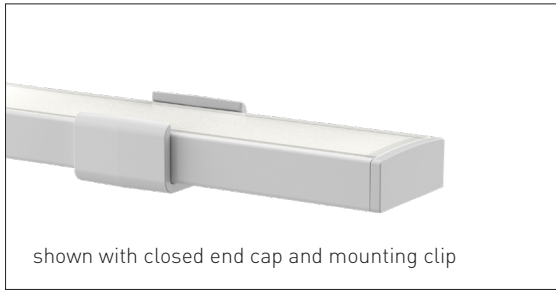


Polymer Low-Profile Surface-Mount Channel



mounting clip



open plastic end cap

The Polymer Low-Profile Surface-Mount Channel is wide and very low-profile, which makes it ideal for areas that call for a discreet light fixture. This polymer channel is semi-flexible for easy handling and can be used without a diffuser cover as a mounting track.

- Channel covers protect LED tape light
- Frosted diffuser covers provide smooth light diffusion
- Easy to handle flexible polymer
- Lightweight

All parts are sold separately.

Item #	Description
AL-82-01-0011-PART	polymer low-profile surface-mount channel, 4 ft.
AL-82-01-0015-PART	polymer low-profile surface-mount channel, 7 ft.
AL-82-01-9902-FRT	frosted diffuser cover, 4 ft.
AL-82-01-9905-FRT	frosted diffuser cover, 7 ft.
AL-82-01-9951-WH	plastic end caps 1 pair pack: 1 open, 1 closed
AL-82-01-9981-WH	plastic mounting clips & screws - 2 pack

This channel is compatible with selected tape light models only, see the "Channel and Tape Light Compatibility & Hotspot Guide" PDF on the Resources page on our website for information.